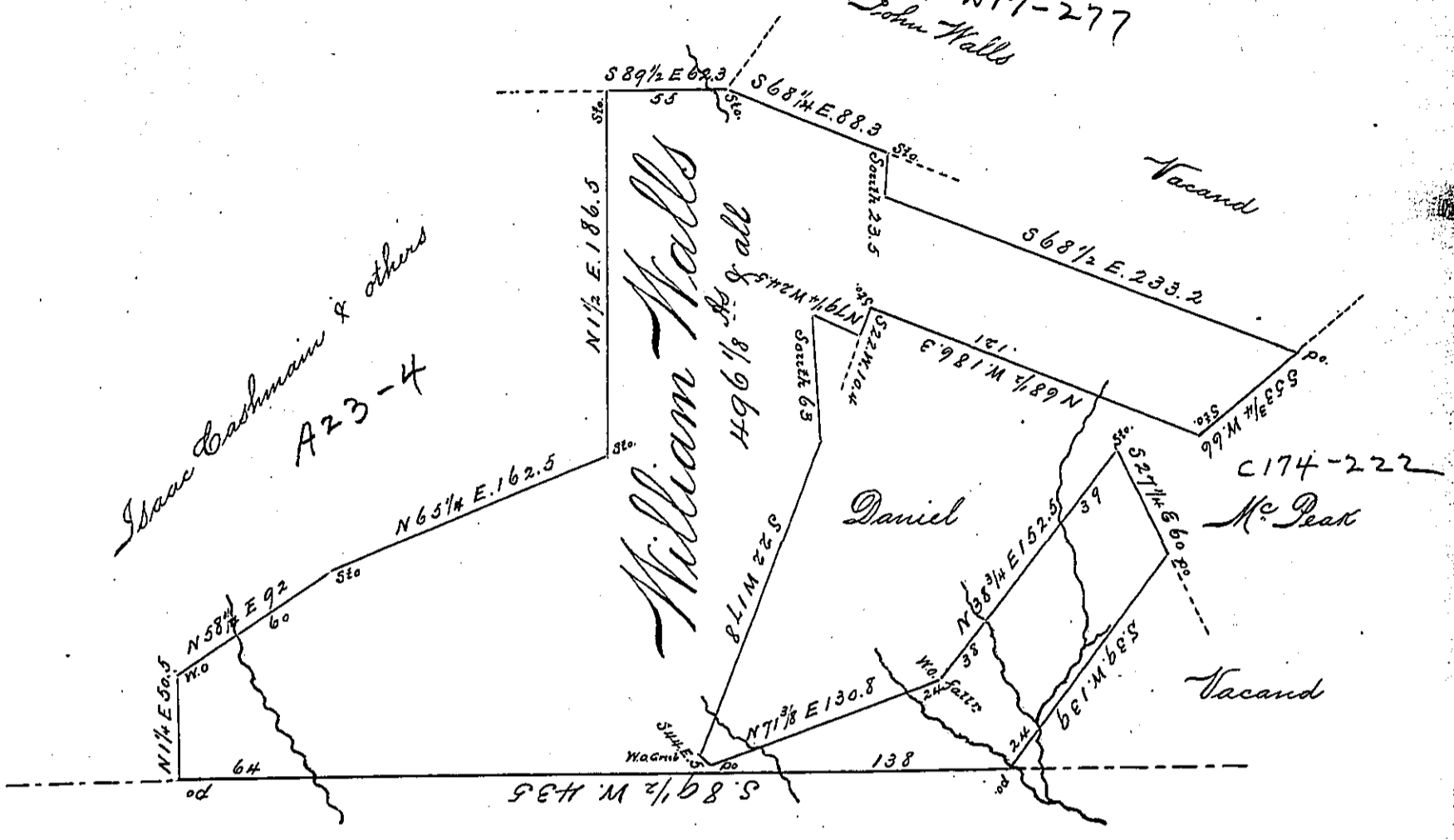


R-13

Geo. McClean

John Walls 217-277

Isaac Cashman & others
A23-4



State line between Penn^a and Virginia

Situate "adjoining the State line" in Wharton
 Township Fayette County and Surveyed 14th
 March 1836. In pursuance of a Warrant in
 the name of William Walls for 400 Acres dated
 the 10th day of February 1794 - there are three
 dwelling houses & families on this land. 40 or 50
 acres cleared & has been improved about 30 years
 F. Lewis D.S.

To Jacob Spangler Esquire
 Surveyor General

IN TESTIMONY that the above is a copy of the original remaining on file in the
 Department of Internal Affairs of Pennsylvania, made con-
 formably to an Act of Assembly approved the 16th day of
 February, 1833, I have hereunto set my Hand and caused
 the Seal of said Department to be affixed at Harrisburg, this
 second day of June 1896

James W. Fatta
 Secretary of Internal Affairs.